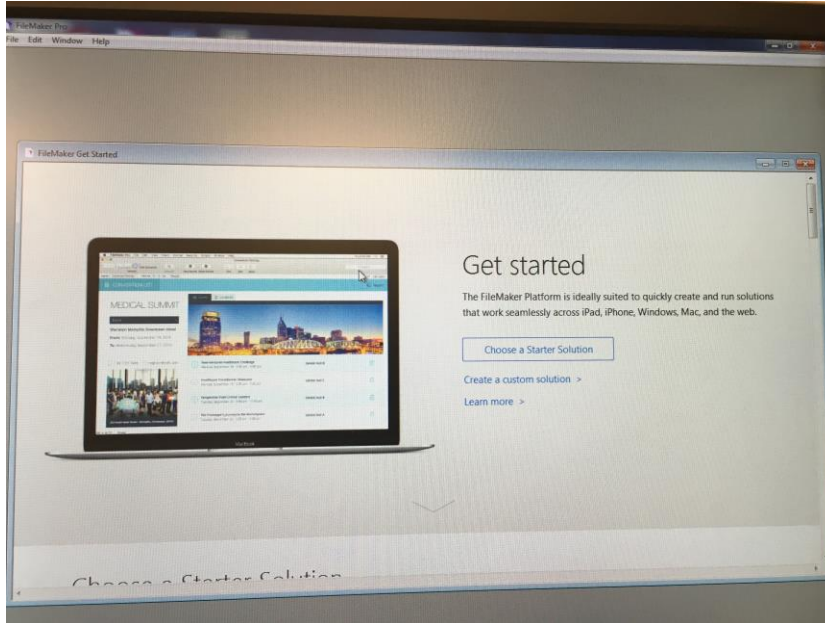
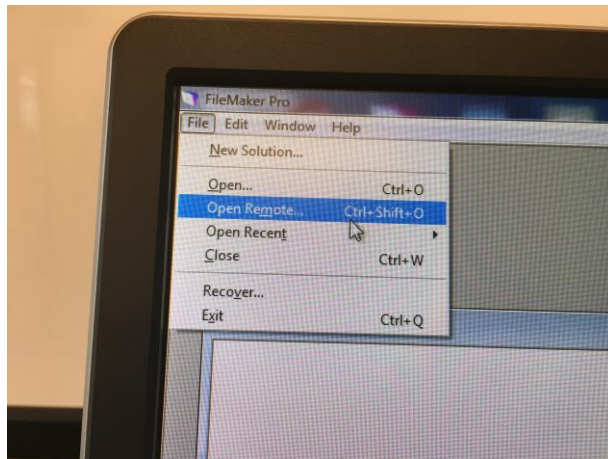


## Opening FileMaker Pro 15 for the first time

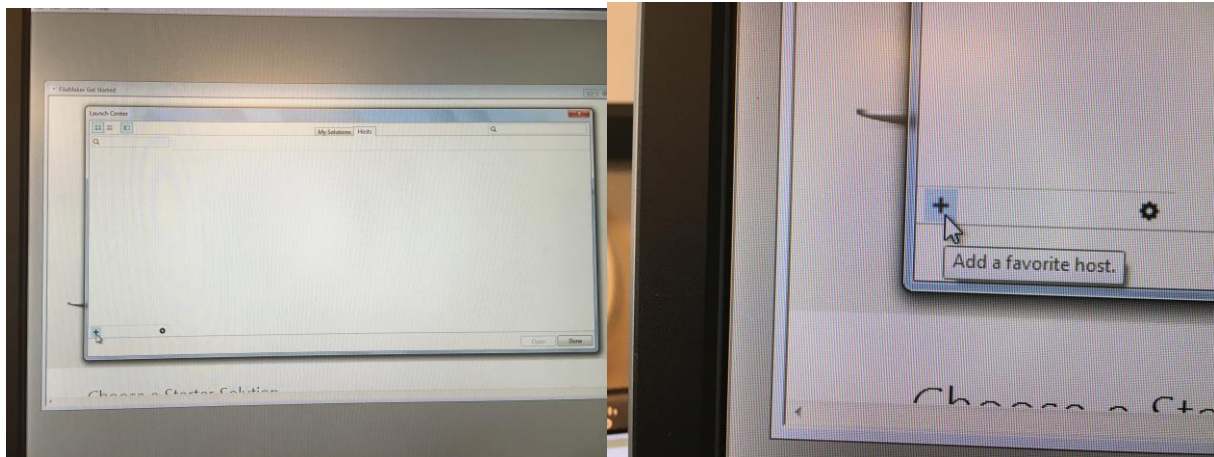
The first time you open FileMaker Pro 15 it will automatically launch a little getting started database.



Select "Open Remote..." from the File Menu



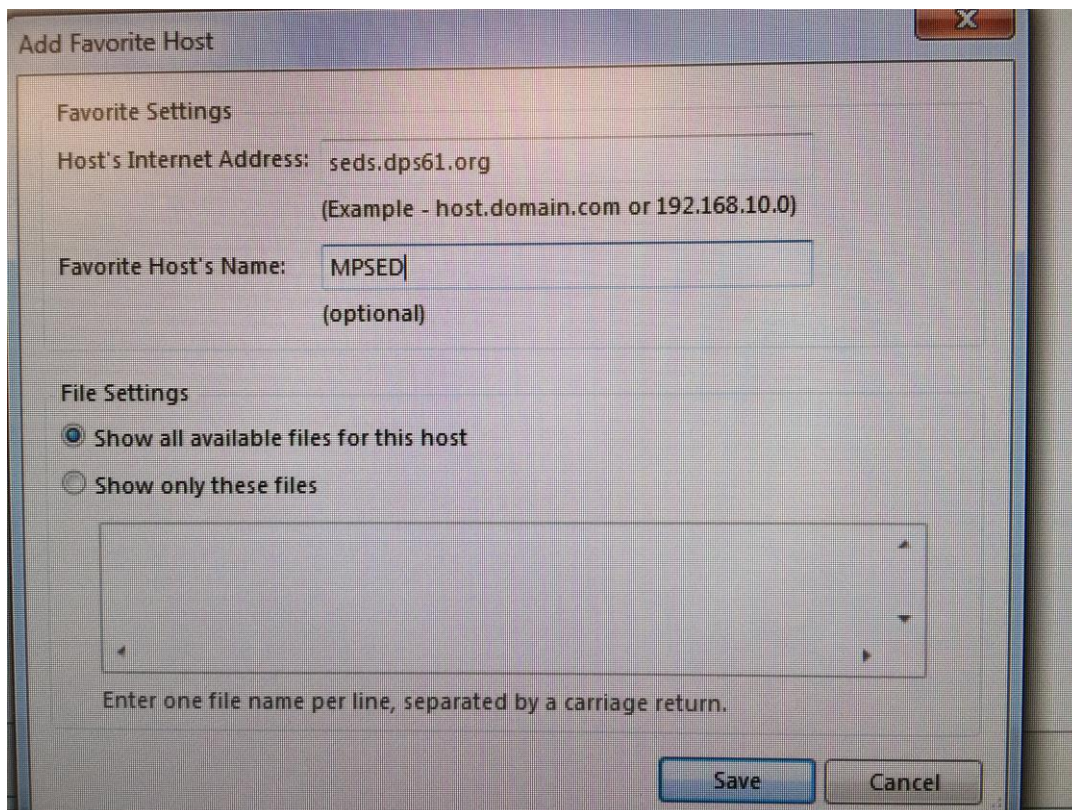
You should see the “Hosts” tab of the launch center. Click the little “+” sign in the lower left corner



This will open the “Add Favorite Host” window. You will need to fill in the Host’s Internet Address and Favorite Host’s Name boxes. The top box, address, is critical and must be entered exactly!

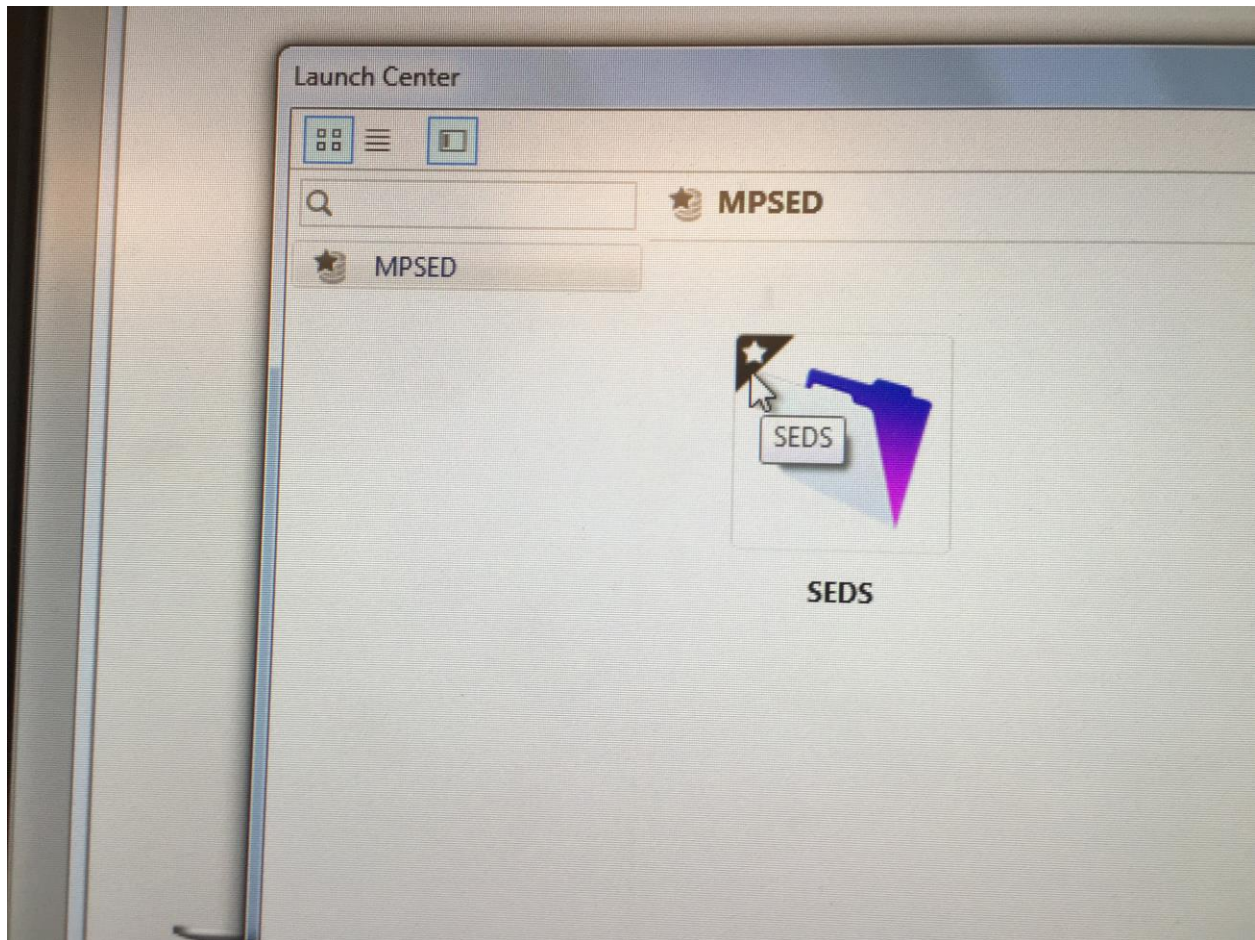
Address: **sed.s.dps61.org**

Name: **MPSED**



Click “Save”

After a minute or two SEDS should pop up and your window should look like this:



Click the top left corner of the SEDS icon to turn it from gray to black. This flags SEDS as a favorite. From now on whenever you open SEDS on this machine, it should open directly to this window. To open SEDS double click on the SEDS icon.